

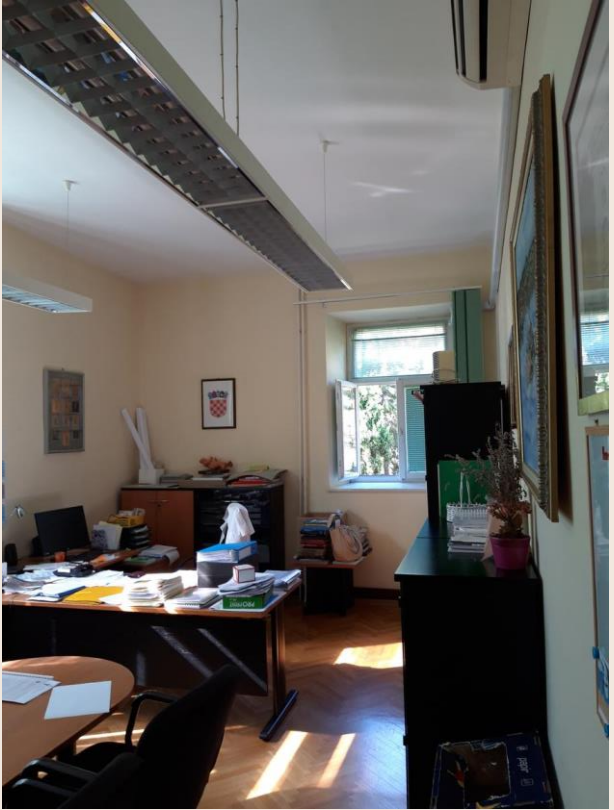


ISTARSKA | R E G I O N E  
Z U P A N I J A | I S T R I A N A

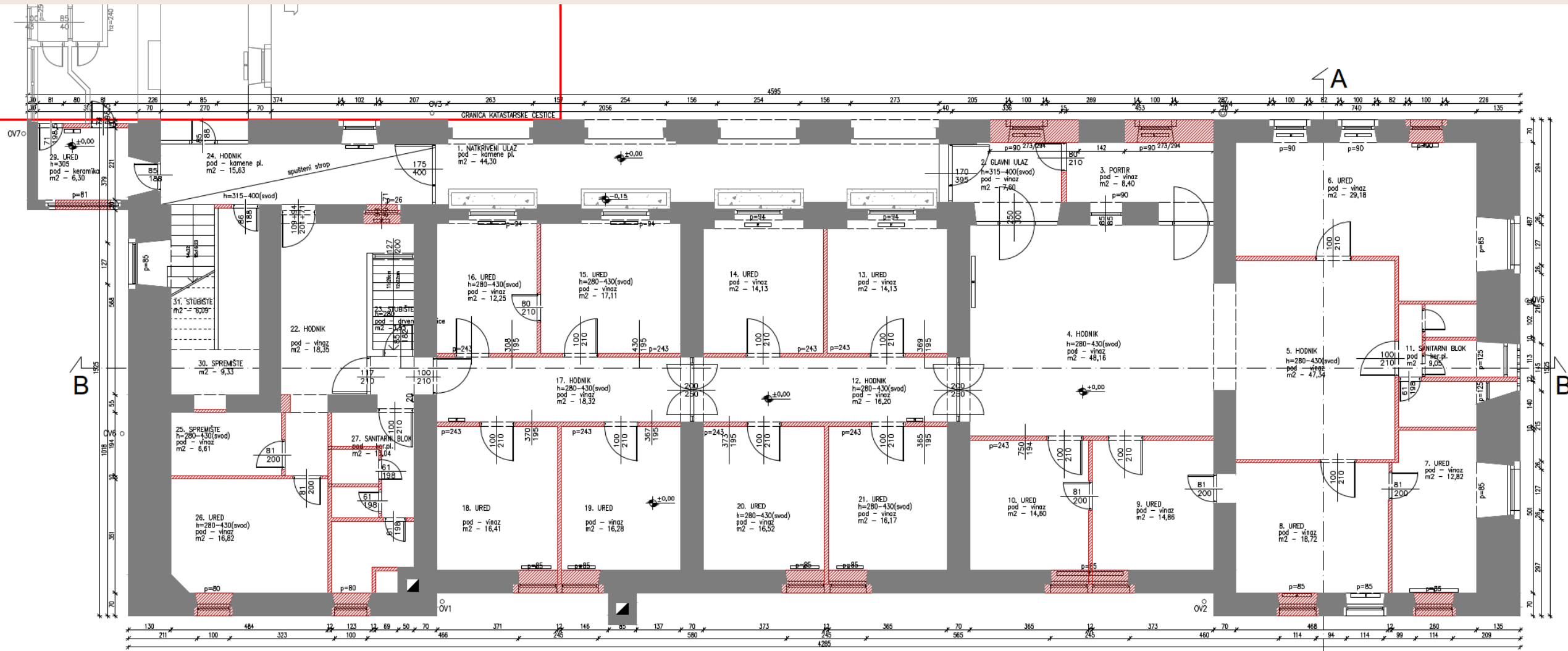
MORNARIČKA BOLNICA PULA  
REKONSTRUKCIJA ZGRADE RAVNATELJSTVA



POSTOJEĆE STANJE



# TLOCRT PRIZEMLJA – POSTOJEĆE STANJE







# NOVA SITUACIJA



1. Kolni pristup

2. Pjesacki pristup

3. Parking

4. Ulazi

5. Spremišta







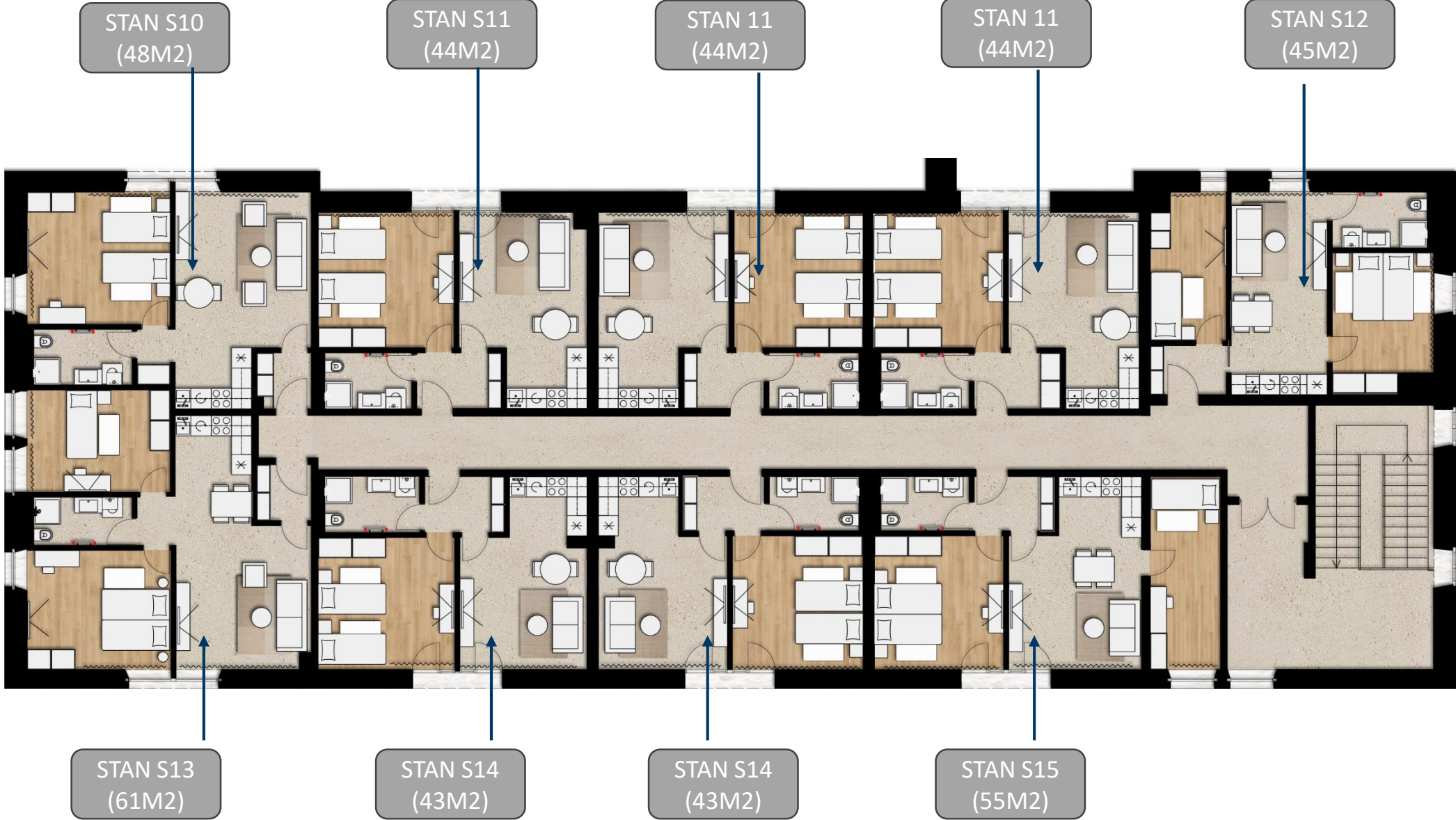
# Tloort prizemlja



Tloort 1. kata

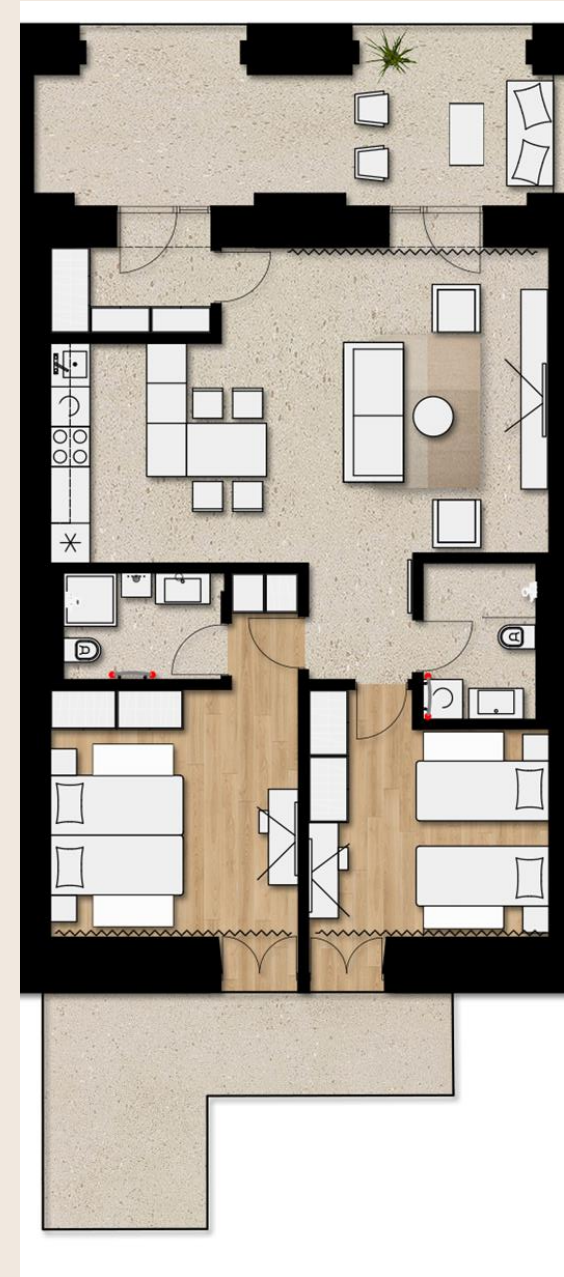


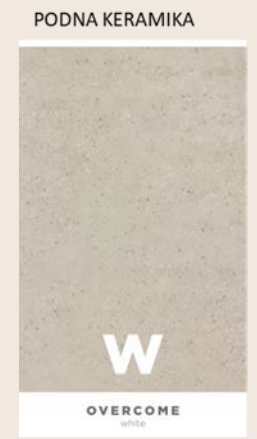
Tloct 2. kata



# PRIJEDLOG INTERIJERA

• PREDPROSTOR	3,25 m <sup>2</sup>
• DNEVNI BORAVAK/KUHINJA/BLAGOVAONICA	34,32 m <sup>2</sup>
• SPAVAĆA SOBA	12,43 m <sup>2</sup>
• SPAVAĆA SOBA	16,70 m <sup>2</sup>
• KUPAONICA	4,00 m <sup>2</sup>
• TOTAL	70,70 m <sup>2</sup>











HVALA NA PAŽNJI!